

## EXD-SF and EXD-S Technical Data Double Deck High Lift Pallet Truck with Driver's Stand-on Platform

---

EXD-SF 20/Li-Ion

EXD-S 20/Li-Ion



## EXD-SF/EXD-S Double Deck High Lift Pallet Truck with Driver's Stand-on Platform Always two loads ahead

				STILL	STILL		
Features	1.1	Manufacturer					
	1.2	Manufacturer's model designation		<b>EXD-SF 20/Li-Ion</b>	<b>EXD-S 20/Li-Ion</b>		
	1.3	Drive		Electric	Electric		
	1.4	Operation		Stand-on/pedestrian	Stand-on		
	1.5	Capacity/load	Q	kg	2000	2000	
	1.5.1	Capacity/load as a double decker	Qi + Qm	kg	1000 + 1000	1000 + 1000	
	1.6	Load centre distance	c		600	600	
	1.8	Load distance	x		922	857	
	1.9	Wheel base	y		1679	1644	
Weights	2.1	Service weight (incl. battery)		kg	1881 <sup>1</sup>	1500	
	2.2	Axle load, laden	drive end/load end	kg	1276/1884 <sup>1</sup>	1550/1950	
	2.3	Axle load, unladen	drive end/load end	kg	889 <sup>1</sup>	1150/350	
Wheels/chassis	3.1	Tyres			Polyurethane	Polyurethane	
	3.2	Tyre size	drive end		∅ 230x90	∅ 250x100	
	3.3	Tyre size	load end		∅ 85x85 (∅ 85x60) <sup>2</sup>	∅ 85x80 (∅ 85x60) <sup>2</sup>	
	3.4	Support rollers size	drive end	mm	2x ∅ 125x60	2x ∅ 140x54	
	3.5	Number of wheels (x = driven)	drive end/load end		1x +2/4 <sup>2</sup>	1x +2/4 <sup>2</sup>	
	3.6	Tread width	drive end/load end	b <sub>10</sub> /b <sub>11</sub>	mm	502/380	470/380
Basic dimensions	4.2	Height of mast when lowered		h <sub>1</sub>	mm	see mast table	see mast table
	4.3	Free lift		h <sub>2</sub>	mm	see mast table	see mast table
	4.4	Lift		h <sub>3</sub>	mm	see mast table	see mast table
	4.5	Height of mast when raised		h <sub>4</sub>	mm	see mast table	see mast table
	4.6	Initial lift		h <sub>5</sub>	mm	125	130
	4.9	Tiller handle height in driving position	min./max.	h <sub>14</sub>	mm	1210/1440	1245
	4.10	Height of wheel arms		h <sub>8</sub>	mm	80	85
	4.15	Fork height, lowered		h <sub>13</sub>	mm	86	91
	4.19	Total length		l <sub>1</sub>	mm	2145	2568/2639 <sup>3</sup>
	4.20	Length including fork backs		l <sub>2</sub>	mm	995/1486 <sup>5</sup>	1414/1485 <sup>3</sup>
	4.21	Total width		b <sub>1</sub>	mm	720	720
	4.22	Fork dimensions		s/e/l	mm	50/180/1150	52/180/1150
	4.25	Overall fork width		b <sub>5</sub>	mm	560	560
	4.32	Ground clearance, centre of wheel base		m <sub>2</sub>	mm	20 (145) <sup>4</sup>	25 (155) <sup>4</sup>
	4.34	Working aisle width with 800 x 1200 pallet lengthwise (b <sub>12</sub> x l <sub>6</sub> )		A <sub>st</sub>	mm	3151 <sup>4,5</sup>	3004
4.35	Turning radius		W <sub>a</sub>	mm	2410 <sup>4,5</sup>	2277/2347 <sup>3</sup>	
Performance data	5.1	Driving speed	laden/unladen		km/h	10/10	8/11
	5.2	Lifting speed (initial lift)	laden/unladen		m/s	0.05/0.06	0.065/0.072
	5.2.1	Lifting speed (main lift)	laden/unladen		m/s	0.14/0.22	0.24/0.28
	5.3	Lowering speed (initial lift)	laden/unladen		m/s	0.10/0.08	0.081/0.081
	5.3.1	Lowering speed (main lift)	laden/unladen		m/s	0.49/0.20	0.24/0.24
	5.8	Max. gradeability	laden/unladen		%	12/20	7/15
5.10	Service brake				Electromagnetic	Electromagnetic	
Electric engine	6.1	Drive motor, rating S2 60 min.		kW	2.3	3.0	
	6.2	Lift motor, rating at S3 15%		kW	2.2	2.2	
	6.3	Battery according to DIN 43531/35/36 A, B, C, no				DIN 43535 3PzS	No
	6.4	Battery voltage/rated capacity K <sub>5</sub>		V/Ah	24/375	24/465	
	6.5	Battery weight ±5% (depends on manufacturer)		kg	290	405	
	6.6	Energy consumption according to VDI cycle		kWh/h	0.82	<1.2	
Misc.	8.1	Transmission control			AC control	AC control	
	8.4	Sound level at driver's ear		dB(A)	62	<70	

<sup>1</sup> With telescopic mast, height 2024 mm

<sup>2</sup> With tandem load rollers

<sup>3</sup> Rear access/side access

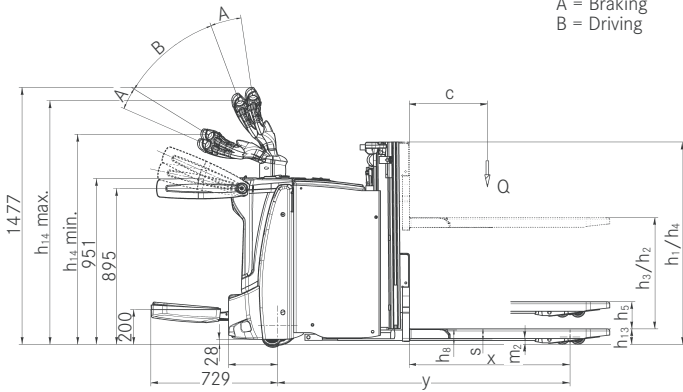
<sup>4</sup> Initial lift raised

<sup>5</sup> For 2PzS: -75 mm, for 4PzS: +75 mm

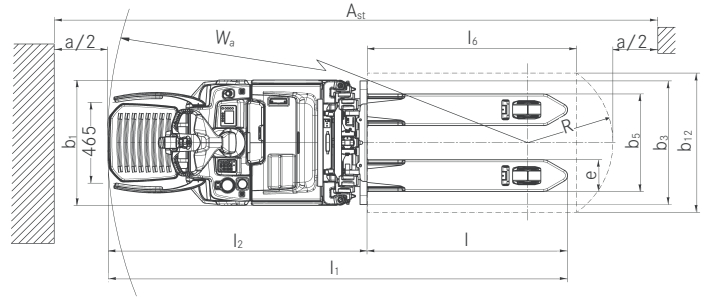
EXD-SF/EXD-S Double Deck High Lift Pallet Truck with Driver's Stand-on Platform  
 Technical Drawings



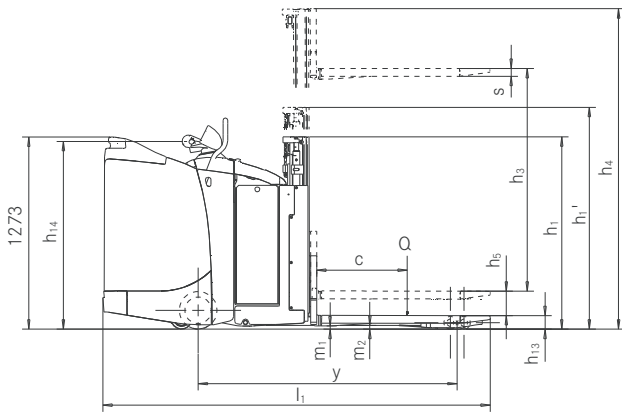
A = Braking  
 B = Driving



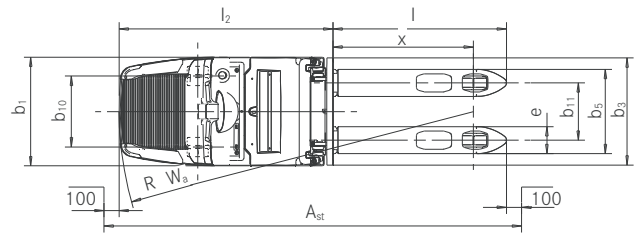
EXD-SF side view



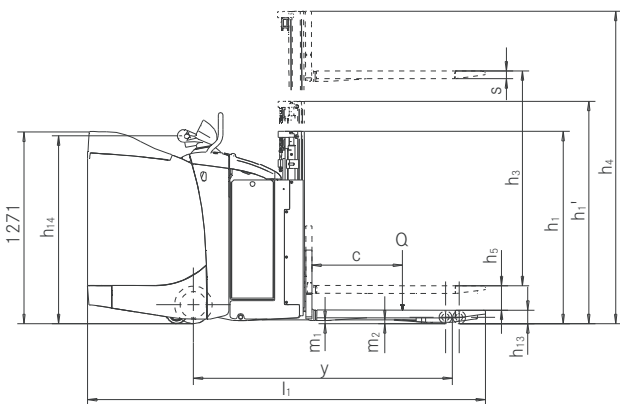
EXD-SF top view



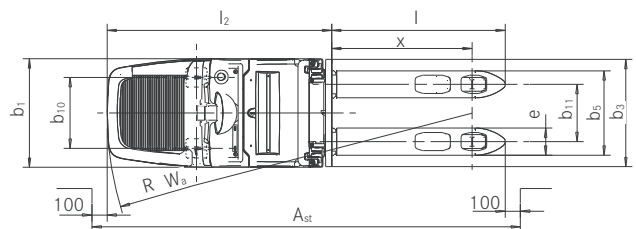
EXD-S rear entry, side view



EXD-S rear entry, top view



EXD-S side entry, side view



EXD-S side entry, top view

EXD-SF/EXD-S Double Deck High Lift Pallet Truck with Driver's Stand-on Platform  
Mast Tables

EXD-SF 20				Telescopic mast				HiLo		Triplex
	Height	$h_1$	mm	1240	1315	1465	1665	1665	1915	1165
	Overall height with applied free lift	$h_1'$	mm	1315	1390	1540	1740	-	-	-
	Free lift	$h_2$	mm	150	150	150	150	1145	1395	645
	Lift	$h_3$	mm	1574	1724	2024	2424	2424	2924	2136
Height, mast raised	$h_4$	mm	2094	2244	2544	2944	2944	3444	2662	

EXD-S 20				Telescopic mast	
	Height	$h_1$	mm	1275	
	Overall height with applied free lift	$h_1'$	mm	1350	
	Free lift	$h_2$	mm	150	
	Lift	$h_3$	mm	1580	
Height, mast raised	$h_4$	mm	2067		



## EXD-SF Double Deck High Lift Pallet Truck with Folding Driver's Stand-on Platform

### Detailed Photos



Powerful and fast: up to 2,000 kg lifting capacity and a top speed of 10 km/h



Everything in view: colour display with language-independent symbols shows all of the important functions



All-round safety: height-adjustable side guards provide optimal protection and stability



At home in any aisle: the particularly compact dimensions enable manoeuvring in even the narrowest spaces



Convenient performance: handles power-intensive drives up ramps with optimal traction thanks to dampened support rollers



Optimum view of forks for high handling capacity and fast threading into pallets



Back-friendly: air-sprung stand-on platform can be adjusted to individual driver's weight



Easy battery replacement: optional lateral battery replacement improves the ergonomics and increases availability



EXD-S Double Deck High Lift Pallet Truck with Driver's Stand-on Platform  
Detailed Photos



High handling capacity and optimal load visibility due to free view mast



Perfect in confined spaces and for loading and unloading of lorries: short and narrow design



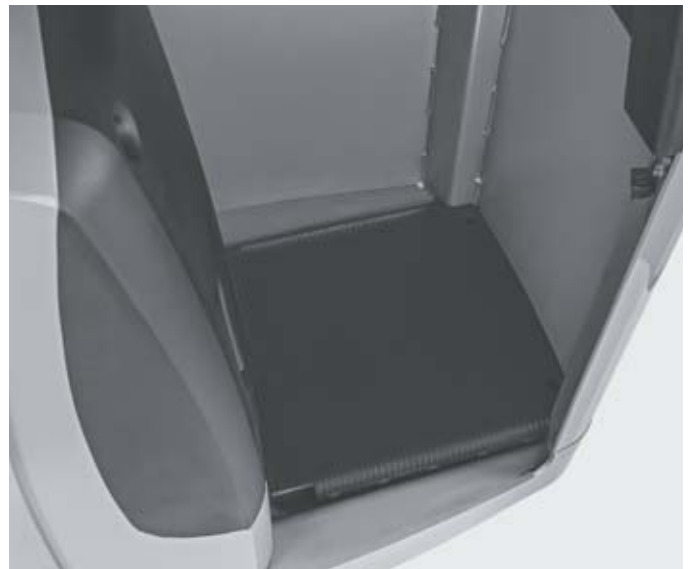
The EXD-S handles power-intensive drives up ramps easily thanks to its specially designed chassis contour



Precise control in every situation thanks to the electrical steering unit



Increased operational hours thanks to fast charging with optional STILL Li-ion technology



Comfortable driving: cushioned stand-on platform for the driver improves ability to concentrate

EXD-S Double Deck High Lift Pallet Truck with Driver's Stand-on Platform  
Always two loads ahead



EXD-SF Double Deck High Lift Pallet Truck with Folding Driver's Stand-on Platform  
Always two loads ahead





## EXD-SF/EXD-S Double Deck High Lift Pallet Truck with Driver's Stand-on Platform Always two loads ahead

---

Speeds of up to 10 km/h and a maximum lifting capacity of up to 2,000 kg enable high handling rates

Fatigue-free and comfortable working thanks to air-cushioned stand-on platform with integrated compressor

Convenient on ramps: hydraulically dampened support wheels for optimal traction



### EXD-SF

---

Are you looking for an ideal option for horizontal transport over medium and long distances with double the performance? Look no further than the EXD-SF! With the double deck functionality, you can transport two pallets up to 1,000 kg each – the perfect solution for the fast handling of pressure-sensitive goods such as fruit or vegetables. Alternatively, you can transport a single pallet weighing up to 2,000 kg. To save you running out of steam even over long stretches, the EXD-SF offers a fold-out, air-sprung stand-on platform. The fold-out, height-

adjustable side arms also guarantee safe driving at up to 10 km/h. STILL Dynamic Drive Control adjusts the driving speed dynamically to the current conditions and guarantees optimal and reliable handling rates in all situations. In addition, the EXD-SF can be operated with one hand and impresses thanks to its hydraulically dampened support wheels with excellent traction and optimal driving convenience – even on ramps and when loading/unloading trucks.

Maximum driving comfort thanks to the cushioned driver's stand-on platform

Ideal operator and goods protection thanks to the automatic speed reduction when driving round corners (Curve Speed Control)

Handles power-intensive drives up ramps thanks to the specially designed chassis contour



### EXD-S

---

Efficient top performance, maximum comfort and the best possible protection – the EXD-S promises all this. On the comfortable dampened driver's stand-on platform, you can also travel long distances quickly and comfortably. The chassis contour was specifically designed to handle power-intensive driving up ramps. And, to help you reach your destination both quickly and safely, the Curve Speed Control assistance system automatically adjusts the speed when driving around corners.

Whether you are transporting two pallets of up to 1,000 kg each or one pallet weighing up to 2,000 kg, the EXD-S allows you to always concentrate fully on the goods you are transporting. Moreover, the truck adapts to your task: use the BOOST mode for maximum performance or switch to the particularly energy-efficient ECO mode for longer operations.

## EXD-SF/EXD-S Double Deck High Lift Pallet Truck with Driver's Stand-on Platform Extensive Equipment

### Power

---

- Powerful and fast: up to 2,000 kg lifting capacity and top speeds of 10 km/h for the EXD-SF and 11 km/h for the EXD-S
- Efficient driving at all times: STILL Dynamic Drive Control adjusts lift heights and speed according to load
- Flexible driving programmes: BOOST, ECO or Blue-Q – from maximum handling rate to highest efficiency
- Twice the handling power: double deck operation for fast turnover of goods
- Convenient performance: handles power-intensive drives up ramps with optimal traction thanks to dampened support rollers

### Precision

---

- Fatigue-free operation: precise and smooth electrical steering unit
- Precise and safe: free view mast and centrally mounted tiller ensure clear view of the tips of the forks
- Everything in view: colour display with language-independent symbols shows all of the important functions
- Accurate handling: sensitive proportional valve control

### Ergonomics

---

- Health-friendly and comfortable operation: pneumatically dampened stand-on platform with integrated compressor for the EXD-SF
- Ergonomic and intuitive operation: driving, lifting and steering processes can be simultaneously controlled by left- or right-handed operators using just one hand
- Easy and quick battery change: optional lateral battery change ensures continuous availability

### Compactness

---

- High pallet reloading rate: compact dimensions allow for fast, safe working even in narrow aisles
- Flexible loading: optional built-in charger enables charging anytime, anywhere
- Store more goods: compact dimensions and high manoeuvrability allow for optimum utilisation of warehouse space

### Safety

---

- Safe around corners: Curve Speed Control automatically adapts speed to the steering angle when cornering
- Optimal driving and walking convenience: exclusive STILL combi tiller
- All-round safety: height-adjustable side guards provide optimal protection and stability
- Accident-free driving: impact plate in optimal position
- Always in safe hands: versatile, flexible access control with FleetManager 4.x

### Environmental Responsibility

---

- Active environmental awareness with the emission-free operation of EXD trucks
- Environmentally friendly and energy-saving ECO driving program
- Over 95% of all materials used are recyclable
- Low operating costs: low energy consumption and long maintenance intervals



# EXD-SF/EXD-S Double Deck High Lift Pallet Truck with Driver's Stand-on Platform Equipment Variants



	EXD-SF	EXD-S	
General	Integrated storage options	●	●
	Set-up of control elements suitable for both left and right-handed operators	●	●
	LED battery charge level indicator	○	●
	Display and operating unit with colour display for selection of driving programme	●	—
	Cold store variant	○	○
	High-performance rotary driving motor for ultra-low maintenance costs	●	●
	Fully enclosed components which are impervious to dirt and dust	●	●
	Electrical steering unit	●	●
	Side protection bars	●	●
	Folding stand-on platform	●	●
	Mechanically sprung stand-on platform	—	●
	Air-sprung stand-on platform	●	—
	Air-sprung stand-on platform with compressor for suspension adjustment	○	—
	Blue-Q energy-saving system	●	—
	Various driving programmes	●	●
	Mast	Accessories bracket and writing pad	○
Smooth lowering of forks and travel stop		○	—
STILL Dynamic Drive Control for improved performance		○	—
Telescopic mast		○	●
HiLo mast		○	—
Triplex mast		○	—
Mast cover		●	●
Mast cover made from transparent polycarbonate		○	—
Tyres	Initial lift	●	●
	Drive wheel tyres, polyurethane	●	●
	Drive wheel tyres, polyurethane, profiled	○	○
	Drive wheel tyres, solid rubber	○	—
	Drive wheel tyres, solid rubber, profiled	○	—
	Drive wheel tyres for slippery floors and surfaces	○	—
	Load roller tyres, polyurethane, single	●	○
	Load roller tyres, polyurethane, tandem	○	●
Safety	Load roller tyres, polyurethane, tandem, lubricated	○	—
	Access authorisation (key)	●	—
	Access authorisation (digicode)	○	●
	FleetManager access authorisation (digicode)	○	○
	FleetManager access authorisation (STILL chip/customer card/customer chip)	○	○
	FleetManager: shock detection	○	○
	Curve Speed Control: speed reduction when driving around corners	●	●
	Speed reduction when forks are lowered	○	○
	Lowering lock when driving at speeds over 2.5 km/h	○	○
	STILL combi tiller: variable tiller length for an adequate distance between the driver and the equipment	○	—
Battery	Working lights	○	—
	Load backrest	○	○
	Battery compartment for battery up to 250 Ah, for changing batteries with a crane	○	—
	Battery compartment for 300–375 Ah battery, for changing batteries with a crane	●	●
	Battery compartment for 400–500 Ah battery, for changing batteries with a crane	○	○
	Battery compartment for battery up to 250 Ah, for changing batteries with a roller track and changing frame	○	○
	Battery compartment for 300–375 Ah battery, for changing batteries with a roller track and changing frame	○	○
	Battery compartment for 400–500 Ah battery, for changing batteries with a roller track and changing frame	○	○
	Battery compartment for battery up to 620 Ah, for changing batteries using a roller track and changing frame	—	○
	Built-in charger for changing batteries using a crane	○	—
	STILL Li-Ion 205 Ah battery	○	○
	STILL Li-Ion 410 Ah battery	○	○
	Built-in charger for Li-ion batteries	○	—

● Standard ○ Option — Not available

STILL GmbH  
Berzeliusstraße 10  
D-22113 Hamburg  
Tel.: +49 (0)40/73 39-20 00  
Fax: +49 (0)40/73 39-20 01  
info@still.de

**For further information please visit:**  
**[www.still.eu](http://www.still.eu)**

STILL is certified in the following areas: Quality management, occupational safety, environmental protection and energy management.

